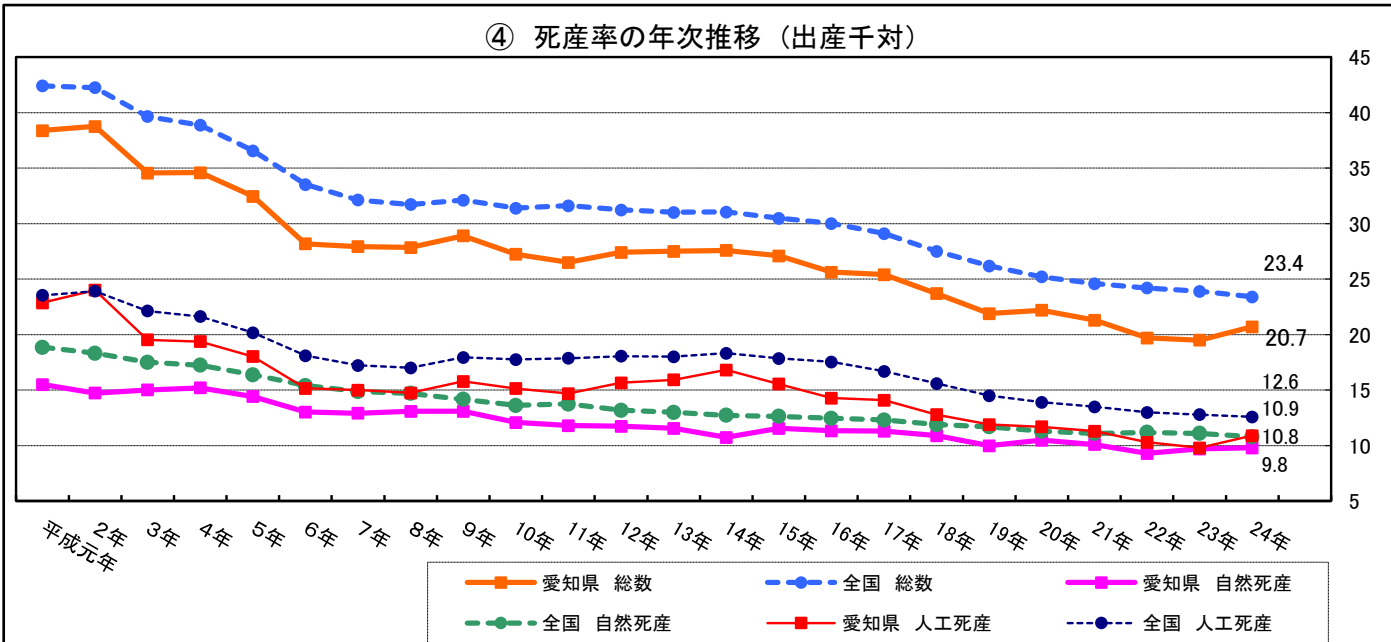
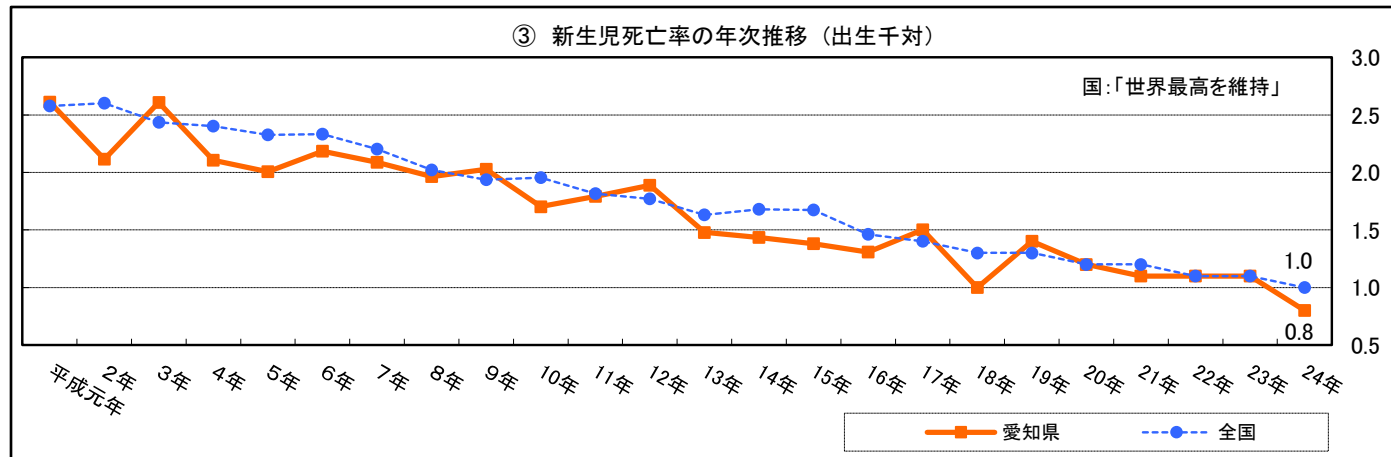
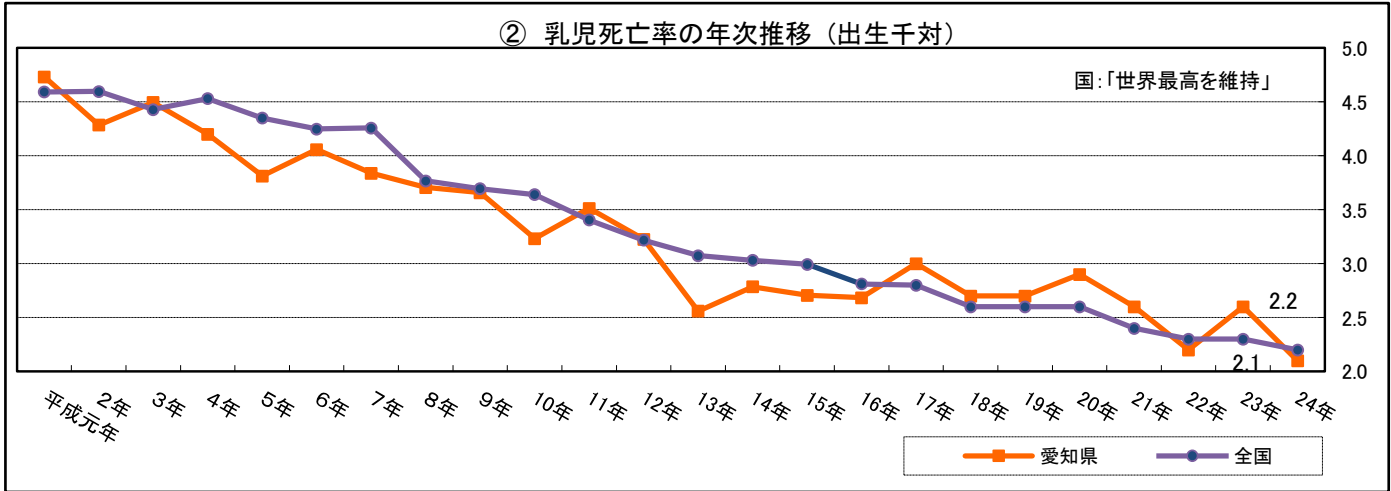
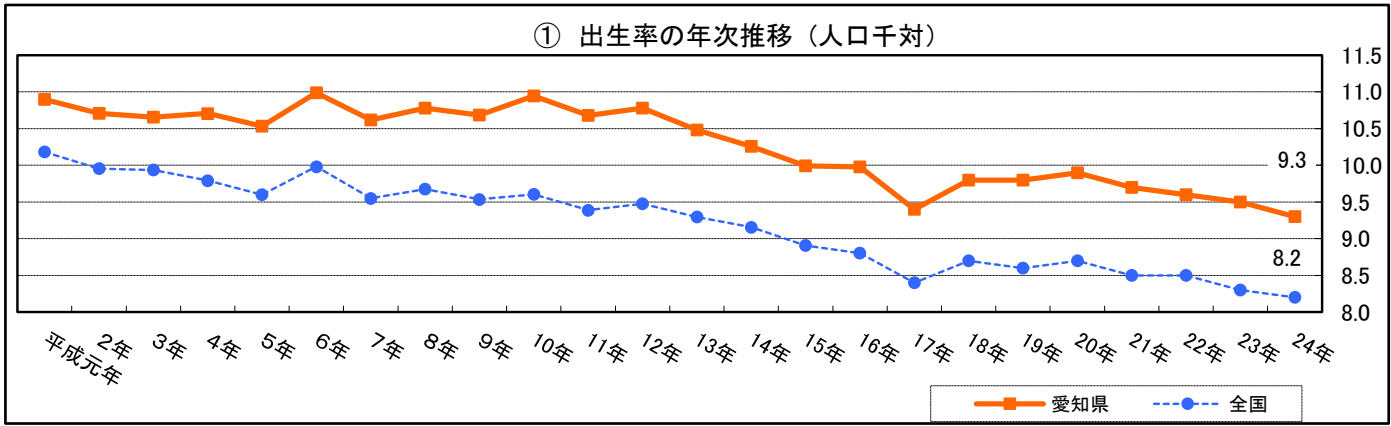
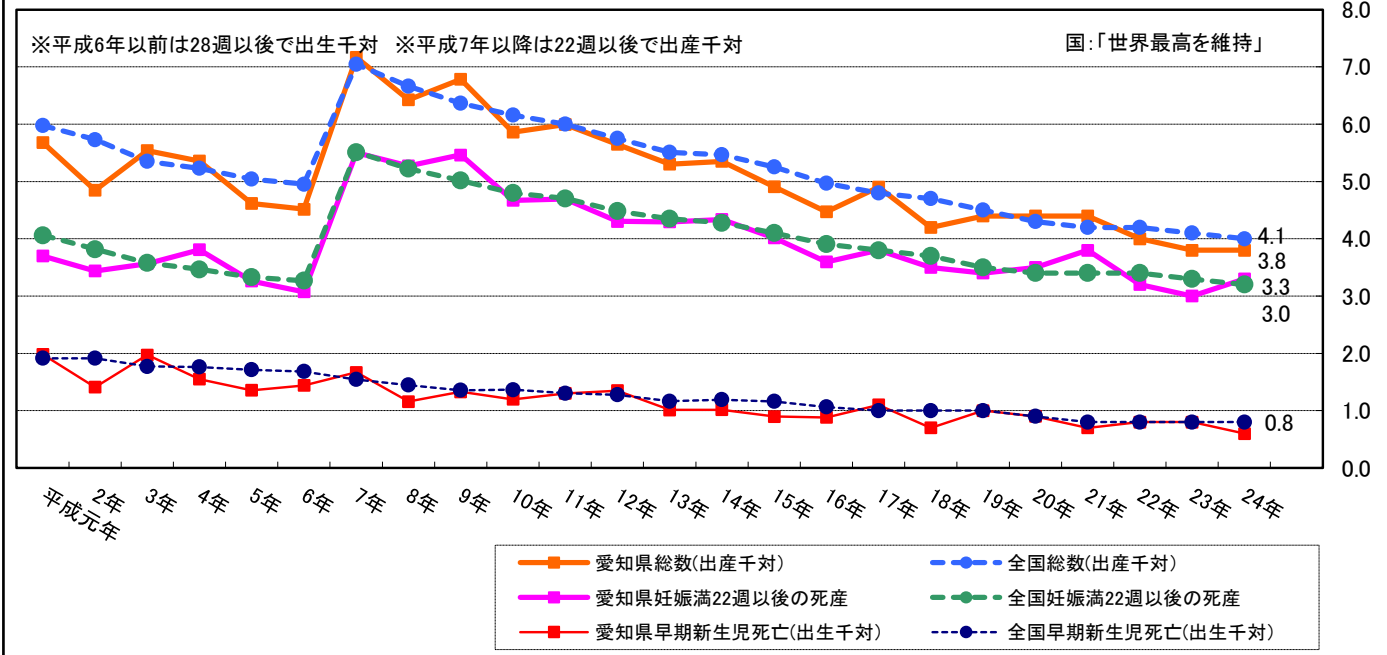


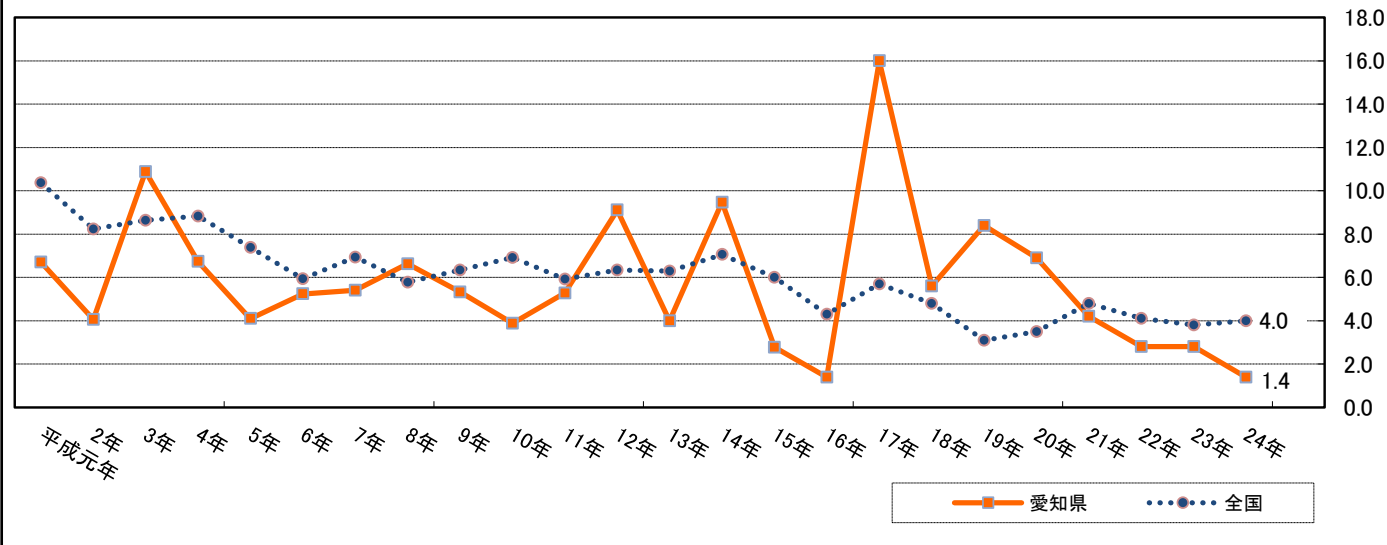
# 人口動態統計(母子保健関係)の年次推移 (グラフ)



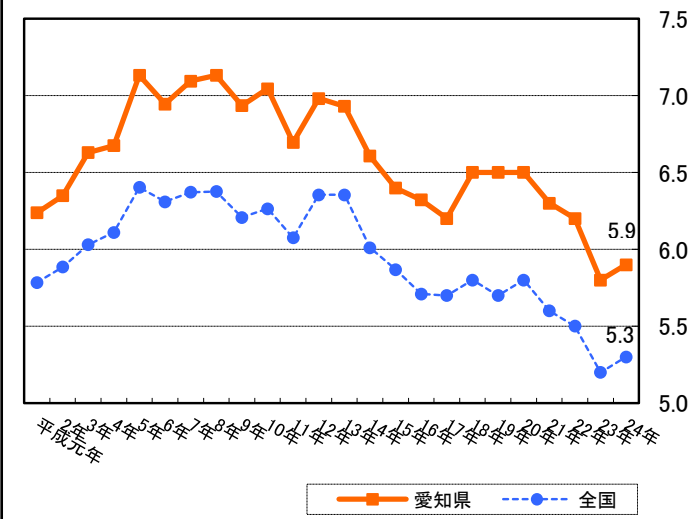
⑤ 周産期死亡率の年次推移（出産千対）＜早期新生児死亡率（出生千対）＞



⑥ 妊産婦死亡率の年次推移（出産10万対）



⑦ 婚姻率の年次推移（人口千対）



⑧ 離婚率の年次推移（人口千対）

